



GMT MONTHLY MEMBERSHIP PROGRESS REPORT

Results as of: 5/31/2020

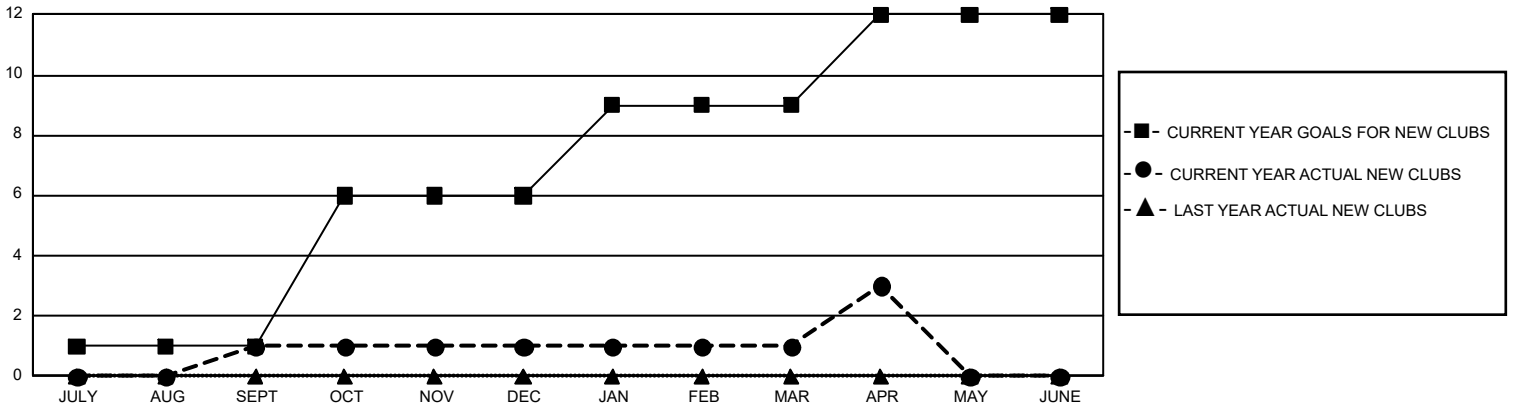
GMT Constitutional Area 5 - J, Group I

GMT: OPEN

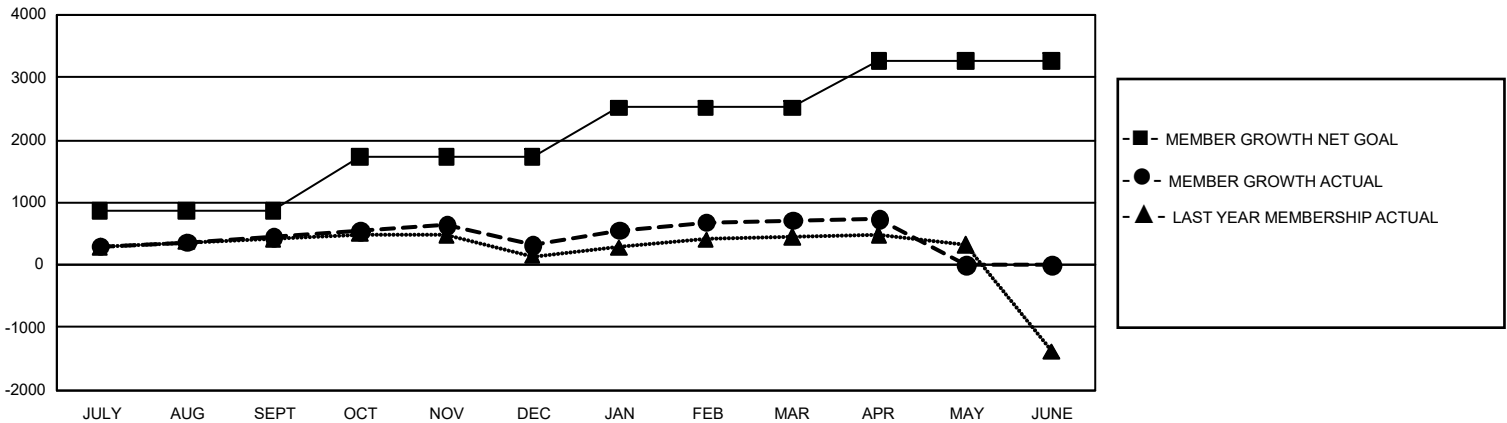
REPORT DOES NOT INCLUDE CLUBS IN UNDISTRICTED AREAS.

| Clubs | | | | Members | | | |
|-----------------------|---------------|-----------|---------------|-----------------------|------------------------|----------------------|--|
| RESULTS FOR 2019-2020 | | | | RESULTS FOR 2019-2020 | | | |
| QUARTER | NEW CLUB GOAL | NEW CLUBS | DROPPED CLUBS | QUARTER | MEMBER GROWTH NET GOAL | MEMBER GROWTH ACTUAL | DROPPED MEMBERS ACTUAL (including transfers) |
| JULY/AUG/SEPT | 3 | 1 | 2 | JULY/AUG/SEPT | 2,595 | 1,034 | 525 |
| OCT/NOV/DEC | 15 | 0 | 1 | OCT/NOV/DEC | 2,598 | 584 | 702 |
| JAN/FEB/MAR | 9 | 0 | 0 | JAN/FEB/MAR | 2,358 | 797 | 380 |
| APR/MAY/JUNE | 9 | 2 | 0 | APR/MAY/JUNE | 2,265 | 166 | 142 |

GOALS AND ACTUAL NEW CLUBS CUMULATIVE



GOALS AND ACTUAL MEMBERS CUMULATIVE



| | | |
|--|---|--|
| DROPPED CLUBS: 3 | 632 CLUBS OF 818 ADDED 1 OR MORE NEW MEMBERS | GENDER DISTRIBUTION MALE 26,486 (73.22%) FEMALE 9,686 (26.78%) |
| DROPPED MEMBERS DECEASED 238 CLUB CANCELLED 35 OTHER 1,475 TOTAL 1,748 | CLICK HERE FOR CUMULATIVE MEMBERSHIP DATA | TOTAL FAMILY UNIT MEMBERS 15,850 FAMILY MEMBERS PAYING HALF DUES 8,581 |